



# Messenger

**Solihull Methodist Church**

March 2024

## Holy Week and Easter



<b>Palm Sunday</b> 24 March	10.30 am	The Chancel Choir will sing 'God So Loved'	Choir
Monday 25 March	7.30 pm	Reflection	Rev Chris Giles
Tuesday 26 March	7.30 pm	Reflection	Rev Donald Ker
Wednesday 27 March	7.30 pm	Reflection	Rev Peter Bates
<b>Maundy Thursday</b> 28 March	7.30 pm	Holy Communion	Rev Molly Chitokwindo/ Rev Dr Nadim Nassar
<b>Good Friday</b> 29 March	11.00 am	Walk of witness	Starting at St Augustine's
	2.00 pm	Meditation	Rev Molly Chitokwindo
<b>Easter Sunday</b> 31 March	9.00 am	Easter Breakfast	
	10.30 pm	Easter Communion <i>Bring a flower to put on the cross</i>	



### In this issue

Church Family News  
Statement from the President and Vice President on Gaza  
Open Church Gathering report  
Finance Matters  
Church Project News  
Thank from Birmingham Christmas Shelter  
Church Council Nominations  
SMASH next production



Soupa Talks  
Palm Sunday  
Green Matters  
Sleepout for Homelessness  
Shine Youth Afternoon Tea  
Opportunity for service  
Property working party

# Church Family News



## Two extra special events 95<sup>th</sup> Birthday and Platinum Wedding Anniversary

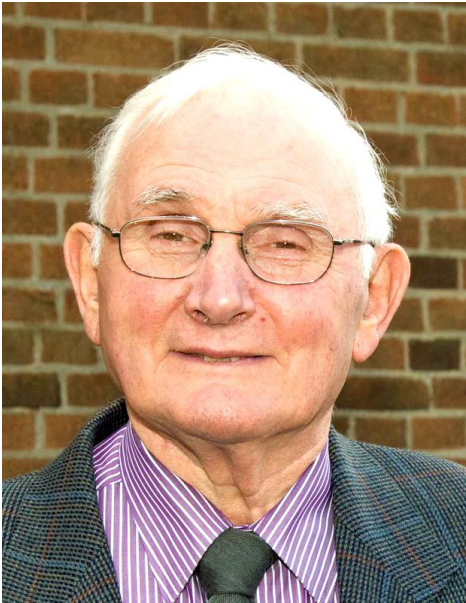
**Molly Bird** will be celebrating her 95<sup>th</sup> birthday on 17<sup>th</sup> March. We wish her a very happy day.

Ten days later she and husband Norman will be celebrating their 70<sup>th</sup> wedding anniversary. They were married on 27<sup>th</sup> March 1954 at Press Methodist Church in Shropshire. Molly and Norman moved to Solihull in 1971. Congratulations on 70 years of marriage.

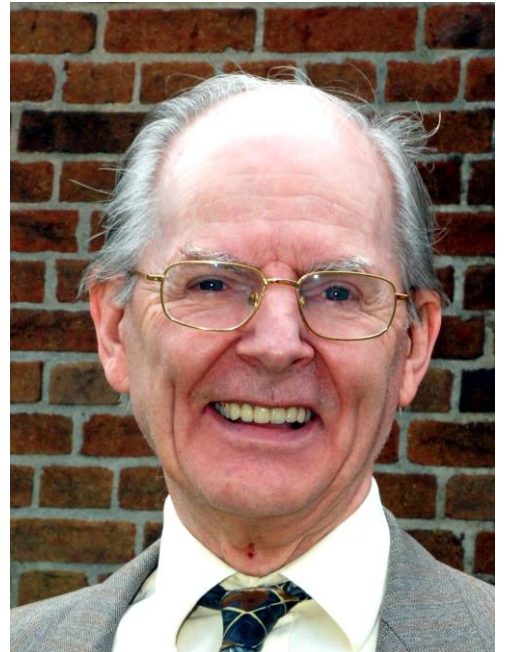


## Deaths

We are very sorry to announce the sudden death of **Kevin Allen**. There will be a short committal on Wednesday 6<sup>th</sup> March at 1.00 pm at the Robin Hood Crematorium. This will be followed at 2.15pm by a Thanksgiving service in our Church. Refreshments will be served in the Church Hall afterwards. All are welcome.



We have recently heard of the death of **Roy Clemas**, aged 91, on 30<sup>th</sup> January in his care home in Teignmouth. Many will remember Roy as a retired minister, Head Teacher of special needs at what is now Swanswell School at a time when it enjoyed boarding facilities, Sunday School teacher and a good friend to many.



We are also sorry to announce the death of **Ray Dickinson**, a very longstanding member of Solihull Methodist Church. His funeral will be at church on Monday 18<sup>th</sup> March at 1.00 pm.

## Prayer Box



We pray for:

- \* David and Eileen, Jess and Leanne on the death of Kevin Allen, and for so many friends who mourn his loss
- \* Edna and Peter Handley, on the death of Edna's brother Bill
- \* Diane Webb, on the death of her father Bill Sanders
- \* Michael and Judith on the death of Michael's father, Ray Dickinson
- \* Alexander Stubb and Suzanne, the son-in-law and daughter of John and Linda Innes, as Alex takes up the role of President of Finland
- \* Peter Stoakley, who has been in hospital
- \* Lucy Powell and Rachel Puopolo recently received into the membership of the church



# A Statement from the President and Vice-President of the Methodist Conference on the situation in Gaza

We are deeply disappointed that the headlines today (22<sup>nd</sup> February) are about a parliamentary process and not the horrors of what is happening in Gaza. Such a vote should be above party politics and we urge the UK government to denounce actions that epitomise a collective punishment of the population of Gaza.

The scale of the destruction and tragic loss of life in so short a space of time is incomparable to any other conflict in recent times. We grieve for all lives lost on 7 October and in the subsequent fighting. There is no justification for such widespread killing of tens of thousands of innocent people and we are gravely concerned for the entire population of the Gaza Strip.

One and a half million people currently shelter in crowded conditions with little food and water in the city of Rafah. The horrific strikes on southern Gaza have killed many in recent days and those injured are unable to get treatment because of Israel's attacks on hospitals.

We were alarmed to hear reports that the Nasser Hospital in Gaza has been shelled, killing patients, staff and others sheltering there. The protection of hospitals during a war is a basic and inescapable requirement in international law.

The International Court of Justice has called on Israel to ensure that its forces do not commit any of the acts covered by the Genocide Convention. Yet attacks on Gaza have

continued with inadequate regard to the protection of civilians. For those crowded into Rafah there is nowhere left to go. It is disturbing to hear that some in the Israeli government are discussing the possibility of creating settlements across the Gaza Strip. Time will tell whether what we witness in Gaza today is an ethnic cleansing of the present population.

Meanwhile, for those sheltering without food and water the situation is critical. To meet the basic human needs of such a large population there is no alternative to an immediate ceasefire. We urge our Government to demand an immediate halt to the shelling for the preservation of innocent life and require that Israel abide by the provisional ruling of the International Court of Justice.

We call on Hamas to immediately release the remaining hostages and urge all governments to work with Israeli and Palestinian parties to achieve an agreement that ensures protection, support and a viable future for innocent victims of this conflict and security for all in the region.

In prayer we stand alongside all those in the region whose heart breaks with ours as we witness the unfathomable suffering. With the psalmist we pray:

*You are my help and my deliverer;  
you are my God, do not delay. (Psalm 40:17)*



**Note** We have no Minister's Message this month because Rev Molly has been doing jury service during February.

# Open Church Gathering

## February 11th

These are the notes from the open church gathering held on February 11th.

### Opening Prayers

Revd Molly opened the meeting with a reading and prayers.

### Revd Molly's Report *verbal report*

Revd Molly was thankful that as a church we are growing but was sad that we had lost Kevin Allen so suddenly. She was grateful to see people at the meeting who had been unwell. Revd Molly explained that some people from other cultures can take a long time to trust and talk to people but that is not the case at SMC where everyone always receives a great welcome which leads people to be friendly and open easily.

### Stewards' update *verbal report*

There had been a very successful build up to Christmas and they thanked everyone for their support in this. Money raised for the Sweet project at the Gift service had now been sent off. Lent Breakfasts are planned. The latest property working party was well attended. We are now registered as a Breast Friendly venue which means we will provide suitable places for breastfeeding to take place. Though we are grateful to have a growing congregation this also means that there are lots of challenges associated with this.

### Abi Godfree's Report *verbal report*

Abi explained that she was now in the 9<sup>th</sup> month of her role. If anyone is interested in supporting her please speak to her. Particular help is needed on a Friday night for Youth Club. Abi is looking for members of the congregation to come and speak to the youth about a hobby or experience they have had.

### Groups' Report:

Reports were received from Property, Pastoral and Community Worker, Rambling, Church Taxi Service, Soupa Talks, Men's Coffee, Open the Book. They are available from the office.

### Property

Thanks were expressed to everyone who has been involved into turning Room 1 into an office space. It will have 3 working areas with an additional working space still available in the original office. The move to the office will begin in the third week of February but will be a slow process to ensure things are moved to the correct space. The new pastoral worker would be based between room 1 and the vestry.

The Quakers have now moved to Shirley Methodist. They thanked the church for its support and have enjoyed seeing the children coming and going.

The Same Sex Marriage registration has started but will take some time to complete.

### SMASH *verbal report*

Tickets have gone on sale for their latest production at the Dovehouse Theatre and already a third have been sold. There will be two matinee performances this year.

### Time for Good News

- Shall we Talk now have their own bank account and have been given a £9,800 grant.
- There are 2 weddings planned in the church.

### Any Other Business

There is an enormous gap to fill taking over the church lettings with Kevin's sudden death.

There are several more roles that need to be filled, which include an administrator and social contact.

A group has been set up to look at what is involved. Ideally, we would look for one person to take over the role, but the group will look at breaking it down and if the process could be made simpler. Thanks were expressed to Howard who has been covering a lot of the emails and also, for the help of Anne Kemp.

Thanks were expressed to the catering committee for the lunch.

Meeting finished at 2.05pm with the sharing of the Grace.

Helen Banks  
Church Council Secretary.



*The meeting was preceded by a church family lunch which had been provided by the catering committee*



# Church Giving

## Expenditure

The diagram shows a summary of the expenditure by Solihull Methodist Church. The largest costs are where people are paid to provide a service, with cleaning, office work and ministerial roles leading the way, followed by energy, water and maintenance costs. The money that goes to the circuit is used to run the Methodist Church at Circuit, District and National levels and provides for ministers or lay workers in churches where those attending are smaller in number.

This adds up to about **£4,200 every week**. Over £200,000 a year.

## Income

The sources of our income are shown in the next diagram. Only 4% of our income actually comes via the offertory bag. Allowing our buildings and car park spaces to be used by external groups is a significant part of our income. They do add to our expenses but their contribution reduces our costs overall. The value of Gift Aid is also obvious, so for any of you who are tax payers and do not yet take part in the scheme, please consider it.

## Gift Aid

This is a government scheme which allows charities to reclaim the tax on any donations they receive. If you pay tax on your salary or pension, every £1 you give to the church automatically becomes worth £1.25. David Grey claims the money back for the church.

To reclaim the tax, David needs to know who has given the money— we don't know whether that pound coin in the offertory bag has come from someone who pays tax or not.

The easiest way to donate money, and to ensure that Gift Aid can be claimed is to set up a Standing Order. This pays the church directly from your bank account. Many of our congregation already do this. This is why you may have noticed that a lot of people don't drop any cash in the offertory bag when it comes round every week.

## Ways to give

### ✓ Envelope Scheme

We will give you a box of weekly envelopes, which can be filled and dropped in the offertory bag when you're at church.

### ✓ Ad Hoc Giving

There are envelopes which allow us to reclaim the Gift Aid if you fill in your name and address on the back. Just ask a steward or a Welcome Steward for a Gift Aid Envelope.

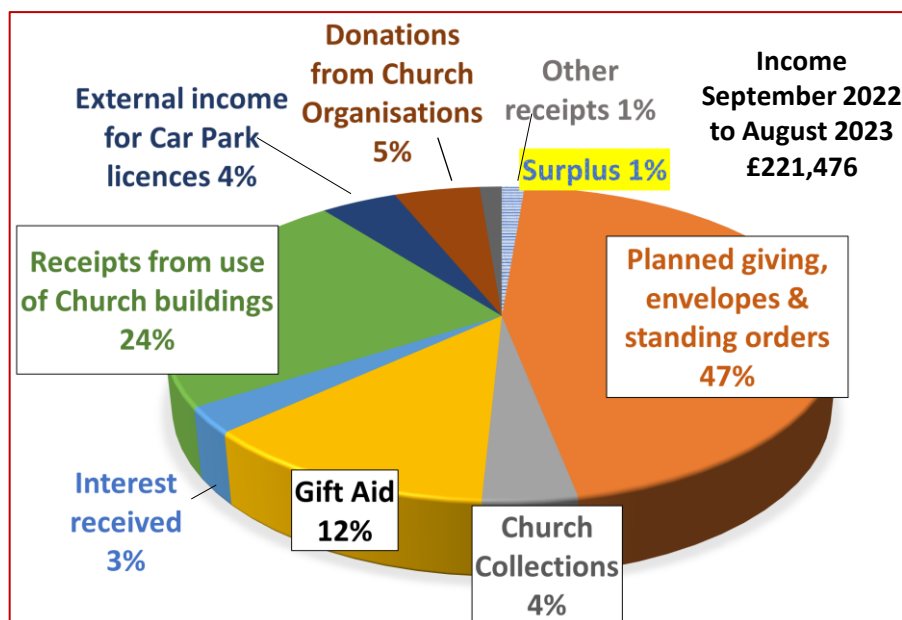
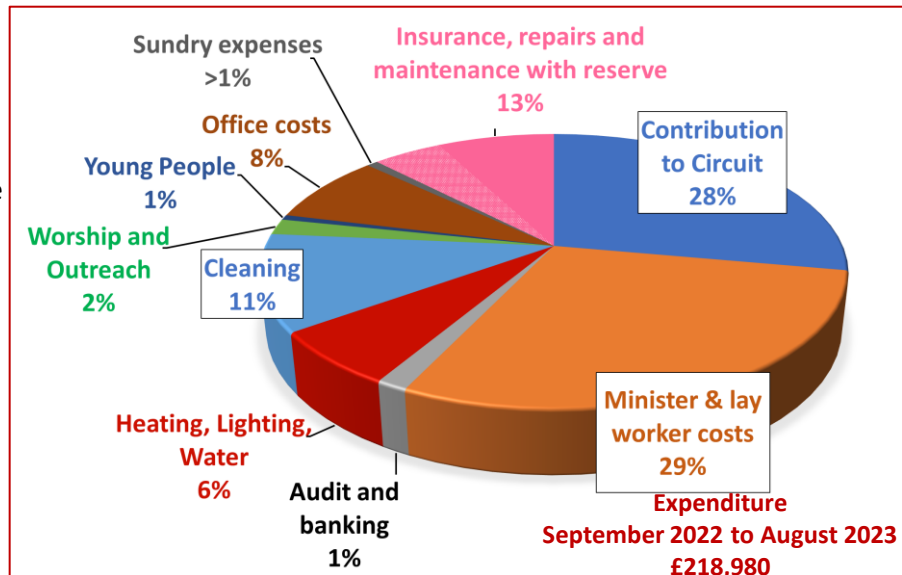
### ✓ Credit card giving

We can accept card payments here in church – you just need to ask a steward or one of the finance team

### ✓ Via the Donations page on the church website

Gift Aid is claimed on these donations as well.

<https://donate.mydona.com/solihull-methodist-church>



If we look at the income, there was a surplus last year but £7,800 paid on the Property and £9,545 paid for Young People's work came from legacies to the church. These costs are not included in the pie charts above.

As we look forward to this financial year with the cost of inflation

**there is a projected shortfall of £11,000.**

## Where do we go from here?

- ❖ **Pray for us** that we will have wisdom as we consider the use of money in our church.
- ❖ **Volunteer** to help where you can. This helps us serve our community and develops relationships as we work together. It also helps save us money.
- ❖ **Thirdly please prayerfully consider your giving** and whether it can increase. Every year there are always those who very reluctantly have to reduce their giving. They must feel free to do so. We are dependent on those who are able to increase doing so. Try to include Gift Aid if you pay income tax.

Please contact David Grey (Gift Aid Secretary) to set up a standing order or join the envelope scheme. If you have other questions please contact Caroline Hinchliffe (Treasurer)

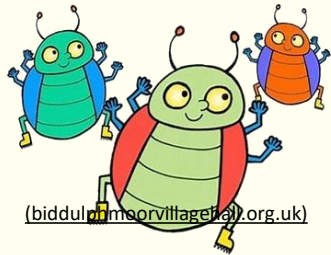
Thank you in anticipation.

# Church Project

# Matthew Rusike Children's Home (MRCH)

Come and join in the fun!  
**Our Family Beetle Drive for all ages**  
**Saturday 2<sup>nd</sup> March**  
6.00 pm

## Beetle Drive



**in the Church Hall**  
**with baked potato supper**  
Tickets (to include supper)  
Adult £10   Child £5   Family £30



## Future Fund Raising Events

Saturday 2 <sup>nd</sup> March	Beetle Drive
Saturday 20 <sup>th</sup> April	Big Bake Off
Sunday 5 <sup>th</sup> May	Allen's marathon run
Saturday 18 <sup>th</sup> May	Barn Dance
Saturday 1 <sup>st</sup> June	Allen's Snowdon climb
Saturday 6 <sup>th</sup> July	Concert
Sunday 28 <sup>th</sup> July	BBQ service
<i>To be confirmed</i>	<i>Open gardens</i>

If you would like to support this charity directly you can donate to:

### Friends of Matthew Rusike Children's Home

Bank: Co- operative Bank  
Sort Code: 08-92-99  
Account Number: 65869309

Please note any direct donation to MRCH will not be counted as part of the church project.

## Thank you from Birmingham Christmas Shelter

As reported in the last issue of The Messenger, carol singing took place outside the entrance to the station. This raised £303 which was given to the Birmingham Christmas Shelter. This is a local charity that has raised funds and recruited volunteers each year since 1974 to provide local homeless and single lonely people with a free, warm, safe place to eat, sleep and enjoy company at Christmas. The church has now received a letter of thanks from the charity. This says that the donation was put towards the costs of recruiting professional security staff and a first aid team to keep things safe for volunteers and guests alike. This year, they were kept busy dealing with several drug-related medical emergencies and aggressive outbursts each day as well as trying to prevent drug use and drug dealing at the shelter itself.

Again, many thanks to those involved and especially to Diane Webb for organising the singing.



## Church Council Nominations

Nominations are now needed for the church council.  
Do you want to find out how the church works?

- Do you want to be involved in decision making for the church?
- Then, this could be a role for you.
- There are only 5 positions available.

To be on the council you need to be

- A church member
- Free for 3 meetings a year in the evening
- Prepared to be a trustee of the church
- Able to consider the views of the whole church when making decisions at meetings

The role is for 3 years.

Nomination forms are available from [cc.secretary@solihull-methodist.org.uk](mailto:cc.secretary@solihull-methodist.org.uk) and must be completed by Sunday 21<sup>st</sup> April

For more information speak to one of the stewards or Helen Banks, the church council secretary.

**SMASH presents**

**The Mikado  
presented by the  
Farndale Townswomen's  
Guild Operatic Society**

A beautiful girl (one of three little maids  
and engaged to an executioner)  
loves a wand'ring minstrel,  
whose father happens to be an Emperor,  
but another is in love with the minstrel too.



To find out what happens, please  
book your tickets now to join in  
the fun with our Church's musical  
theatre group, SMASH

*Disclaimer:* please be aware that this  
version of "The Mikado" presented  
by the Farndale Townswomen's  
Guild Operatic Society may not go  
quite as Gilbert and Sullivan would  
have expected.

What could possibly  
go wrong?

**Please choose your seats online:**  
[ticketsource.co.uk/smash](https://ticketsource.co.uk/smash)

**Friday-Sunday 12-14th April 2024**

Friday and Saturday at 7:30 pm; Saturday and Sunday at 2:30 pm

**Dovehouse Theatre, Langley School**

**Lent Breakfasts**

Start at 8.30 am with breakfast in the church hall

Date	Speaker	Topic
2 March	Rev Molly Chitokwindo	Prayer as friendship
9 March	Rev Chris Giles	Prayer as rhythm
16 March	Rev Peter Bates	Forms of prayer
23 March	Rev Donald Ker	When prayer is hard

**Palm Sunday**

**Sunday 24<sup>th</sup> March**

The chancel choir will sing the choral musical  
**God So Loved** during the morning service

**Soupa Talks**



Light lunch, chat and an interesting talk,  
1.00 pm in the Church Community Centre

**Wednesday 13<sup>th</sup> March**

The work of UKMED  
Doctors on the frontline

**Wednesday 27<sup>th</sup> March**

Growing up in Zimbabwe  
Rev Molly Chitokwindo

**Wednesday 10<sup>th</sup> April**

Tales from the chef  
Ivan Crowdell

**Soupa Talks**

**10<sup>th</sup> Anniversary Cream tea**  
with

**Who let the Ukes out?**



To celebrate Soupa Talks 10th anniversary we  
will be having a cream tea in the church on

**Wednesday 8<sup>th</sup> May, 3.00 pm**

There will be entertainment by  
**Who let the Ukes out?**

**Tickets £10**

**GOD**  
*So Loved*

A contemporary choral musical for Holy Week

by **Pepper Choplin**

orchestrated by Ed Hogan

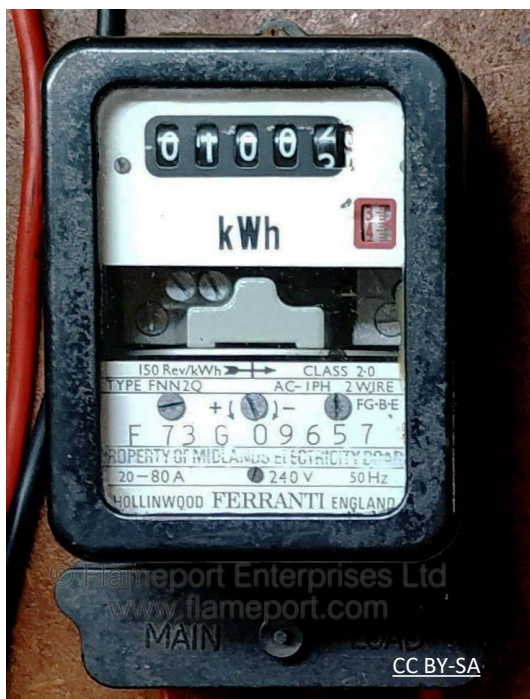
**HOPE** Publishing Company  
Since 1892  
[www.hopepublishing.com](http://www.hopepublishing.com)  
800-323-1049



# Green Matters Caring for God's Creation

## Remember the Lent Challenge

I hope everyone has been reading their electricity meters, has calculated how much they 'normally' use in 3 weeks and are now trying very hard to save as much electricity as possible in a second 3 weeks, in the hope of winning one of the boxes of chocolates promised to the 2 who do best. Please give me your calculations at church or send them to richardbalmer162@btinternet.com.



## Can you hard-boil an Egg?



I am no great shakes as a cook. I'm proud of my fish pies (courtesy of Mary Berry) and my porcini pasta (Jamie Oliver) and I've known about hard boiling eggs since I was a cub: put in saucepan, boil water with a pinch of salt (in case the egg cracks), simmer at half heat for 10 minutes, take out and throw away hot water.

Throw ... away... the ... hot ... water? What a waste of electricity!

I did an experiment. I boiled the hot water with the egg in (3 minutes) and immediately switched off the electricity. After 10 minutes the temperature of the water was still 80°C and the egg was done. I had saved almost 2/3rds of the electricity.

This technique of switching off early can obviously be used anywhere where there is residual heat – in water or an oven. The food will continue to cook in the remaining heat of the oven even if it takes a few minutes more.

## Kettles get clever.

We have a new kettle. It is transparent so one can see exactly how much is inside and it cannot just boil water but heat it to one of 4 other temperatures: 50, 70, 80, and 90°C. We enjoy a green tea which is prepared best at 80°C. (More than that and some flavours boil off). More electricity can be saved.



## £188 raised for the Church Project

Thank you, once again. This time for all your donations given for serving coffee and tea after church in January. £188.20 was raised and was topped up to £300 for the Church Project with the help of Greener Church funds

Richard Balmer: On behalf of the Greener Church Group: John and Linda Innes, Pam Beattie, Bryan Fitter, Anthony Gough, Sue Kelley, Derek Giles, Sue and Richard Balmer, Glen Mullineux.





# Sleep Out 4 Homelessness



*Everyone should have a home*

[www.yorkshirenortheastmethodist.org/district-youth/sleep-out](http://www.yorkshirenortheastmethodist.org/district-youth/sleep-out)

## Young Yorkshire Methodists sleep out for homelessness

Young Methodists spent a cold and damp night sleeping in the garden of Lidgett Methodist Church in Acomb, near York on the night of Saturday 20 January. The event was held to increase awareness of the situation facing the local homeless community and to raise money for two of the charities who support them.

"It really was a pretty miserable experience," said Victoria Etherington, Children's and Youth Ministry Leader for Yorkshire North and East Methodist District and York Circuit. "It was so hard for any of us to get any sleep. We were safe, but for those who are forced to sleep rough, there is a real fear of violence."

The young people had sleeping bags and tents, a luxury not available to all those who are sleeping rough but, nevertheless, gave the young people some experience of the struggles facing those who are forced to live on the street.

Two of the young Methodists involved described what the night outside had meant to them. Amy commented, "I think I'm very privileged to live in a house where I feel safe and secure and won't be moved on. By raising money, we are helping those who don't have this privilege themselves. Josh said, "Homelessness is such a big issue that there should be a way to prevent it. Taking part in the sleep out showed my support for those who have to sleep rough while also helping to raise awareness of the issues."

The event raised much-needed funds for two local charities who help those living rough. One of them is Carecent, based at Central Methodist Church in St Saviourgate, York, the other Inspire North, which operates across North England providing housing and mental health support for the homeless.

Carecent is a breakfast centre for those who are homeless and otherwise socially excluded. This includes those who are sleeping on the streets, as well as those who are accessing emergency accommodation within resettlement hostels. Many of our service users have multiple, complex needs, including mental health, substance abuse, gambling or an offending history.

Kiera Snaith is Project Leader at Carecent, she commented "We offer drop-ins with podiatrists, hairdressers, housing services, sexual health clinics, Hep C Testing and much more. Alongside this we also run sessions including art classes, a walking group and drama.

"We helped support this year's sleep out by developing a housing game for those who were participating on the night to play. The idea was to show the complexity of some of our clients lives, and that a lot of our customer's journey is not as simple as 'they chose this life'.

"Homelessness is a complex issue and we only see the tip of the iceberg."



*One of the adults who took part in the sleep out and helped watch over the young people to ensure they were safe was the Yorkshire North and East District Chair Leslie Newton, who shares this reflection on the experience.*

*"I joined a group of young people and leaders as we braved the elements to 'Sleep Out for Homelessness.' This is the 5th year that this event has happened and every year someone asks why we can't do it in the summer rather than on a cold, windy January night. But that, of course, is part of the point! We got cold, we weren't able to sleep much, and we felt just a little of how desperately hard it must be to not have a warm house and bed. However, we were all deeply aware of just what a token effort it was! Throughout the night we knew that we could go back into a warm building in the morning and have hot drinks and breakfast. We could then have a shower and get warm and put on fresh clothes. The following night we would be back in our normal comfortable spaces.*

*Over the years these sleep outs have raised well over £20,000 for local charities who are working with the homeless. And every year we invite those we're supporting to come and help us learn more about the acute needs."*

[www.methodist.org.uk/about-us/news/latest-news/all-news/young-yorkshire-methodists-sleep-out-for-homelessness/](http://www.methodist.org.uk/about-us/news/latest-news/all-news/young-yorkshire-methodists-sleep-out-for-homelessness/)

# AFTERNOON TEA

Fundraising for



**SUNDAY 21 APRIL 2 - 5PM**

**WREN HALL, SCHOOL LANE  
WROXALL, CV35 7NE**

[www.shineyouth.org.uk](http://www.shineyouth.org.uk)

# SHINE YOUTH

restoring hope

SHINE YOUTH is Christian charity in Solihull with whom volunteers from many of the local churches provide listening and mentoring support to 11 - 18 year olds experiencing mental health and wellbeing difficulties like anxiety and bereavement.

They are fundraising to continue and to expand this work as it is in high demand in schools and at their Youth Wellbeing Cafe in Shirley.

## Need to talk to your minister?

You don't need to go through anyone.  
I am here for everyone and  
just a phone call away, feel free, please ring  
07878 757024, Rev Molly

## Anxious? Concerned?

Contact the confidential  
**Prayer Chain**  
via Chris Giles  
via the church office



## Church Team



**Rev Molly Chitokwindo**  
Minister  
Day off - Friday



**Abi Godfree**  
Children, Youth and  
Families worker



**Diane Webb**  
Pastoral and Community Worker



**Janice Smith**  
Church Administrator  
Tuesday - Friday



**Chris Giles**  
Pastoral Coordinator

**Church Office**  
**0121 705 7367**



[www.solihull-methodist.org.uk](http://www.solihull-methodist.org.uk)

## The Messenger Team

Pete Austin, Sue Balmer, Rev Molly Chitokwindo, Riva Chung, Bryan Fitter, Jeff Horton, Sue Kelley, Glen Mullineux, and Lawrie Rumens  
Please send material for publication to  
[messenger@solihull-methodist.org.uk](mailto:messenger@solihull-methodist.org.uk) We reserve the  
right to edit articles if necessary.

Please send photographs **separately** as jpeg files

**NB. Last date for April Messenger items is  
Sunday 10<sup>th</sup> March**



# March Diary

Sunday	Monday	Tuesday	Wednesday	Thursday	Friday	Saturday
					<b>1</b> 6.30 Youth Club	<b>2</b> 8.30 Lent Breakfast 6.00 Beetle Drive for church project
<b>3</b> 10.30 Morning service	<b>4</b> 9.45 Pushchair Club 10.00 Shall we talk? 7.30 Scouts 7.30 Church Council	<b>5</b> 9.30 Communion 10.15 Contact Choir 10.30 Men's Coffee 10.30 Bible Study 5.00 Rainbows 6.00 Brownies	<b>6</b> 9.30 Morning prayers by Zoom 10.30 Classic Cantonese Fellowship	<b>7</b> 6.00 Beavers 6.30 Cubs 8.15 Badminton	<b>8</b> 10.30 Friendship Café 6.30 Youth Club	<b>9</b> 8.30 Lent Breakfast
<b>10 Mothering Sunday</b> 10.30 Morning service with communion	<b>11</b> 9.45 Pushchair Club 10.00 Shall we talk? 7.30 Scouts	<b>12</b> 9.30 Communion 10.15 Contact Choir 10.30 Bible Study 10.30 Men's coffee 5.00 Rainbows 6.00 Brownies	<b>13</b> 9.30 Morning prayers by Zoom 10.30 Classic Cantonese Fellowship 1.00 Soupa Talks	<b>14</b> 6.00 Beavers 6.30 Cubs 8.15 Badminton	<b>15</b> 6.30 Youth Club	<b>16</b> 8.30 Lent Breakfast  9.30 Property Working Party
<b>17</b> 10.30 Morning service	<b>18</b> 9.45 Pushchair Club 10.00 Shall we talk? 7.30 Scouts	<b>19</b> 9.30 Communion 10.15 Contact Choir 10.30 Men's Coffee 10.30 Bible Study 5.00 Rainbows 6.00 Brownies	<b>20</b> 9.30 Morning prayers by Zoom 10.30 Classic Cantonese Fellowship	<b>21</b> 9.30 Ramble 6.00 Beavers 6.30 Cubs 8.15 Badminton	<b>22</b> 10.30 Friendship Café 6.30 Youth Club	<b>23</b> 8.30 Lent Breakfast
<b>24 Palm Sunday</b> 10.30 Morning service  6.30 Healing service with communion	<b>25</b> 9.45 Pushchair Club 10.00 Shall we talk? 7.30 Scouts 7.30 Holy Week reflection	<b>26</b> 9.30 Communion 10.15 Contact Choir 10.30 Men's Coffee 10.30 Bible Study 5.00 Rainbows 6.00 Brownies 7.30 Holy Week reflection	<b>27</b> 9.30 Morning prayers by Zoom 10.30 Classic Cantonese Fellowship 1.00 Soupa Talks 7.30 Holy Week reflection	<b>28 Maundy Thursday</b> 7.30 Holy Communion	<b>29 Good Friday</b> 11.00 Walk of witness 2.00 Good Friday Meditation	<b>30</b>
<b>31 Easter Day</b> 9.00 Easter Breakfast 10.30 Morning service						

## Property Working Party

**Saturday 16<sup>th</sup> March**

**9.30 am – 12.30 pm**

Come and help spruce up the church  
buildings and grounds.

There are many jobs to be done.



**The Lost Property Box will  
be emptied –**

please make sure that nothing  
of yours is in it

## Opportunity for Service

Could you help for 10 hours per week to cover  
for absence of Finance Assistant in June/July?

Skills needed include numeracy and IT skills.  
You will learn the job alongside Wai before he  
goes away.

Please contact the treasurer Caroline  
Hinchliffe



## Youth Club – Decorating Biscuits for the church project

The Youth Club had great fun at the beginning of February when they spent the evening decorating biscuits. The beautifully decorated biscuits (shown in the picture below) were then sold after the morning service on Sunday 4<sup>th</sup> February. They raised £81 for the church project.

Well done , Youth Club



## Re-naming children and young people's groups

The children and young people's teams are concerned that the names of groups have been confusing. It is to us, so we can only imagine how difficult it is for those of you who don't know. So we have decided to rename our groups to be clearer.

We have a pattern. The first word of the name is to assign an age group and the second word or phrase will describe the activity.

- **Young Church** - all the Sunday morning children's and young people's work as a whole.
- **Children's Church** - nursery year to year 5 inclusive (infants and junior school age) who meet in room 5 on a Sunday morning.
- **Youth Church** - year 6 to school leavers, (Seniors) who meet in room 3 and the stage on a Sunday morning.
- **Youth Club** - year 6 to school leavers, who meet on a Friday evening, a relaxed space for young people, where we build friendships amongst ourselves and with visitors from across the congregation.

Abi Godfree

## Church Mission Statement

*We believe that to make the all-embracing love of Jesus Christ known, we need to be brave in God's changing world so that all can belong and find hope.*